



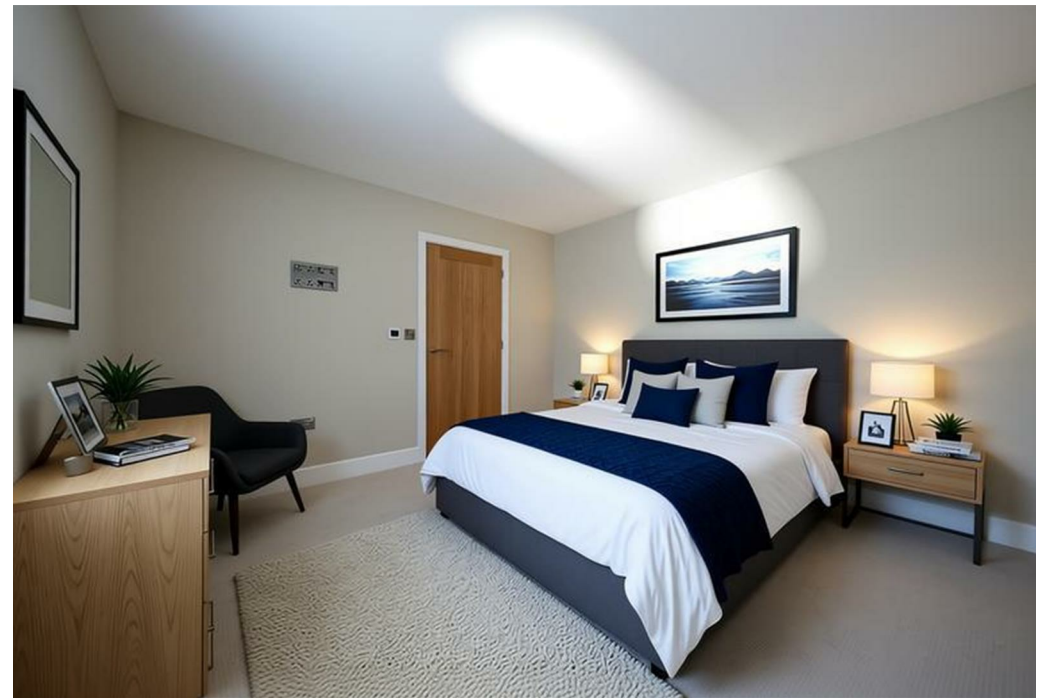
Leicester Road, Hinckley, LE10 1LS

Property Description

*** PHASE 2 & FINAL RELEASE -
DON'T MISS OUT *** OPEN EVERY
TUESDAY IN JUNE BY APPOINTMENT
ONLY ***

3 Bedroom Dormer bungalow with high
specification.







Key Features

- *** PHASE 2 & FINAL RELEASE - DON'T MISS OUT ***
- SMALL DEVELOPMENT OF 16 BRAND NEW BUNAGLOWS TUCKED AWAY IN QUIET CUL DE SAC LOCATION
- SINGLE GARAGE WITH AMPLE PARKING TO FRONT AND REAR
- PRIVATE GATED DEVELOPMENT
- ENSUITE TO MASTER BEDROOM
- INTEGRATED APPLIANCES INCLUDING WINE COOLER & QUARTZ WORKTOP
- CCTV AND BURGLAR ALARM INCLUDED AS STANDARD
- EXCEPTIONALLY HIGH SPECIFICATION
- REAR GARDEN WITH BEAUTIFUL CURVED BRICK WALL
- HINCKLEY TOWN CENTRE WITH WALKING DISTANCE

£500,000